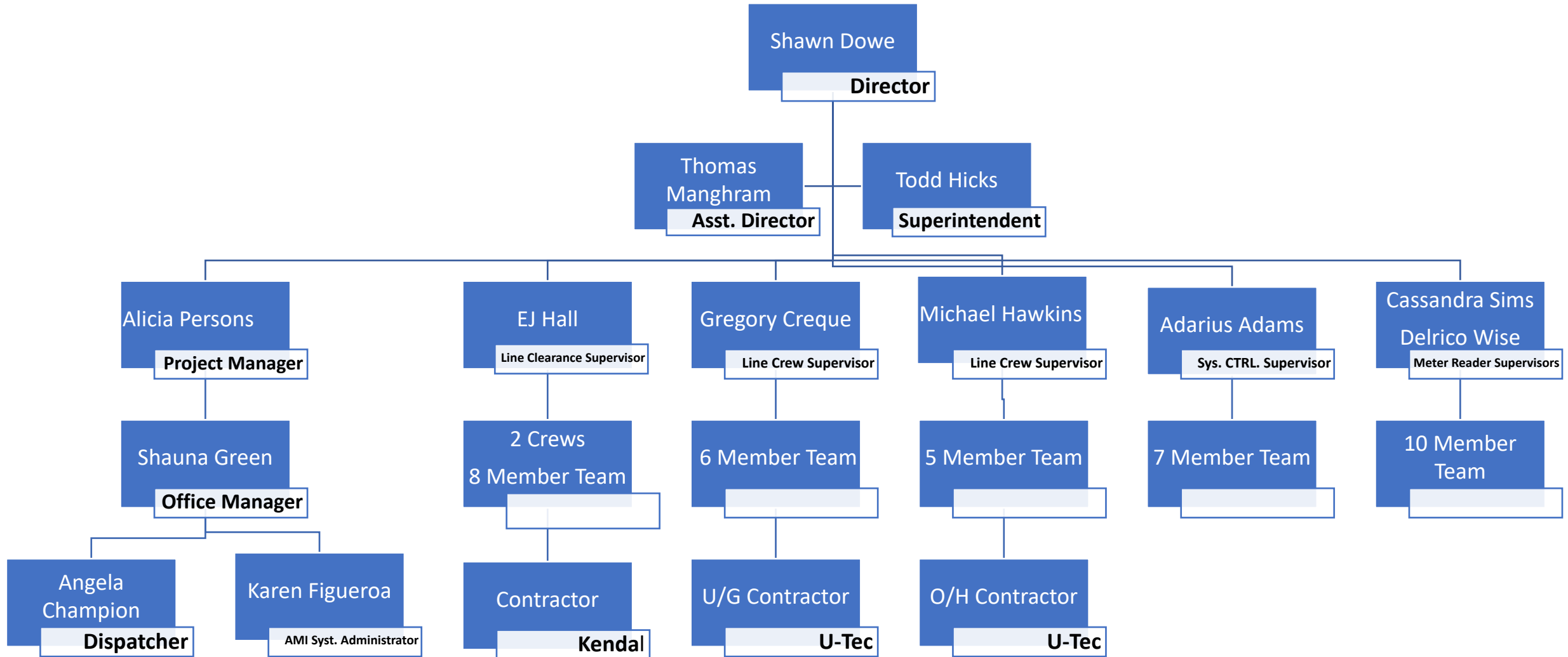




East Point Power Update 2022-2023



Meet the Staff

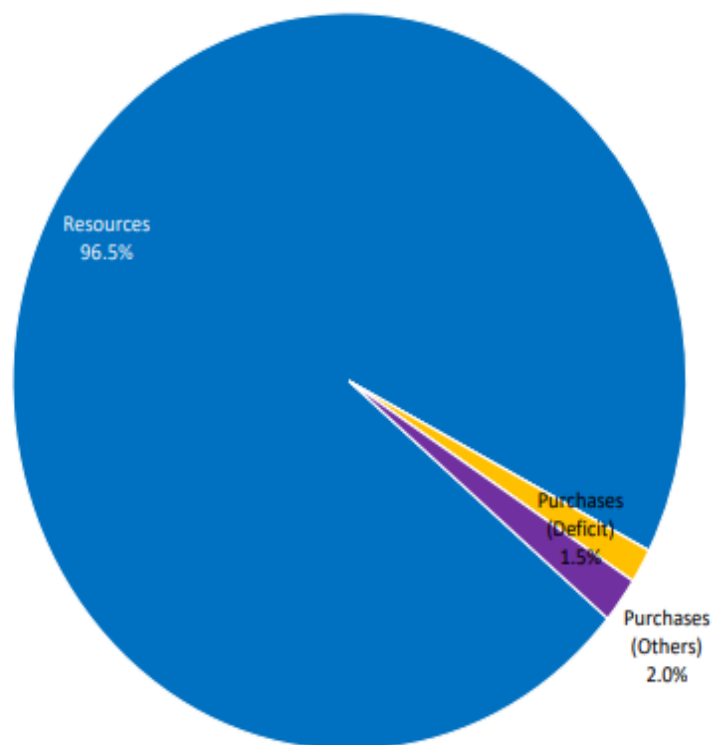


MEAG
Municipal Electric
Authority of Georgia

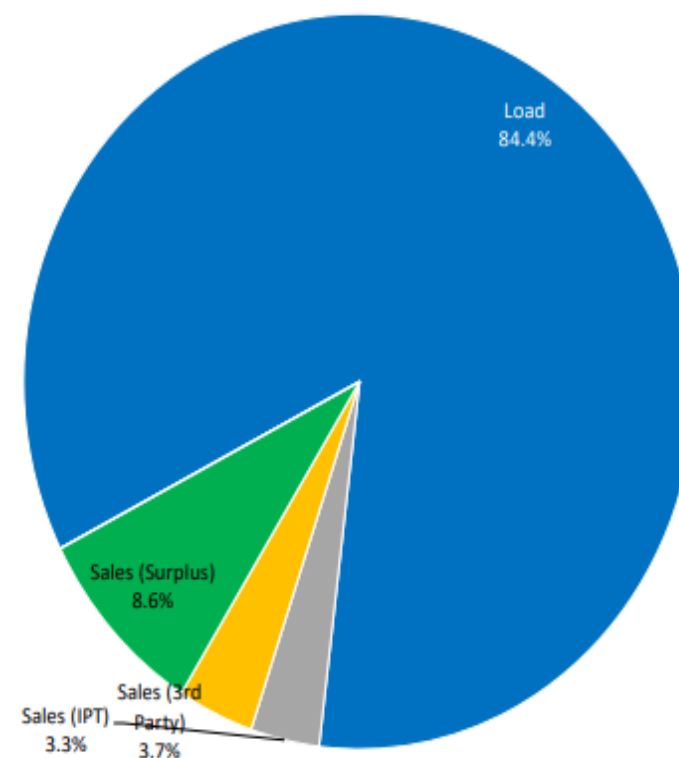
How we
obtain our
power

EAST POINT: FUEL MIX

GENERATED AND PURCHASED ENERGY		
Resources	550,372,722	96.5%
Purchases (Deficit)	8,638,509	1.5%
Purchases (Others)	11,463,716	2.0%
TOTAL	570,474,947	100.0%



ENERGY USED AND SOLD		
Load	481,649,720	84.4%
Sales (IPT)	18,876,019	3.3%
Sales (3rd Party)	20,897,346	3.7%
Sales (Surplus)	49,051,862	8.6%
TOTAL	570,474,947	100.0%

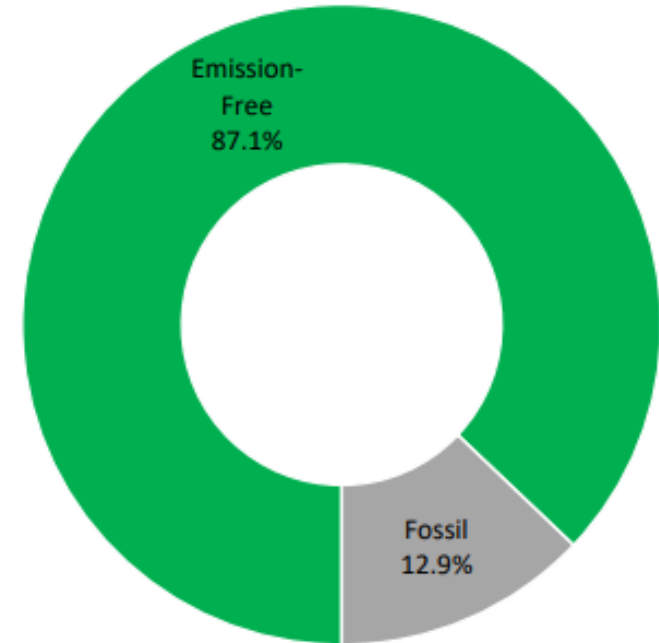
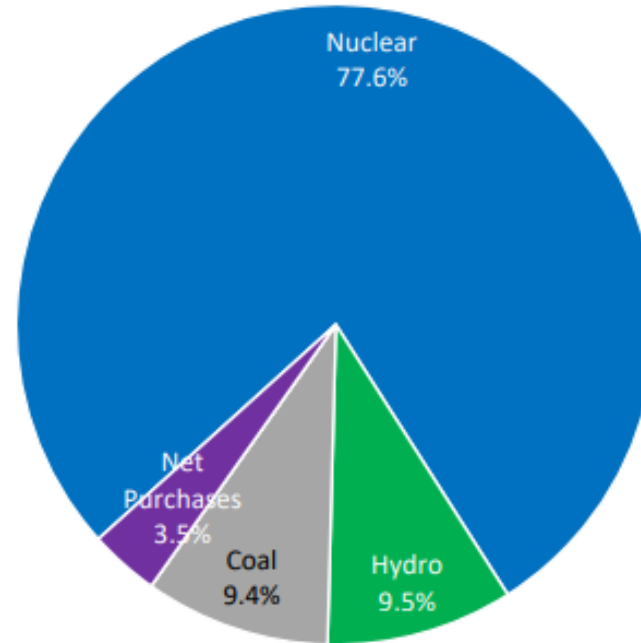


Figures are energy available to serve participant load after Off System Sales and System Imbalance) as reflected on YTD Schedule 3 of the MEAG Power December bill.
Other Purchases: include Third Party Project, TMR, Other, Sonat, OSP, Third Party Supplemental, Summer Purchase, Annual Strip, and buy-through.

EAST POINT: FUEL MIX

FUEL MIX: OWNED AND PURCHASED ENERGY		
Nuclear	442,820,180	77.6%
Hydro	53,969,908	9.5%
Coal	53,582,634	9.4%
Net Purchases	20,102,225	3.5%
TOTAL	570,474,947	100.0%

FUEL MIX: EMISSION		
Emission-Free	496,790,088	87.1%
Fossil	73,684,859	12.9%
TOTAL	570,474,947	100.0%



Details of resources available to serve participant load after Off System Sales and System Imbalance, from YTD Schedule 3 of the MEAG Power December bill.

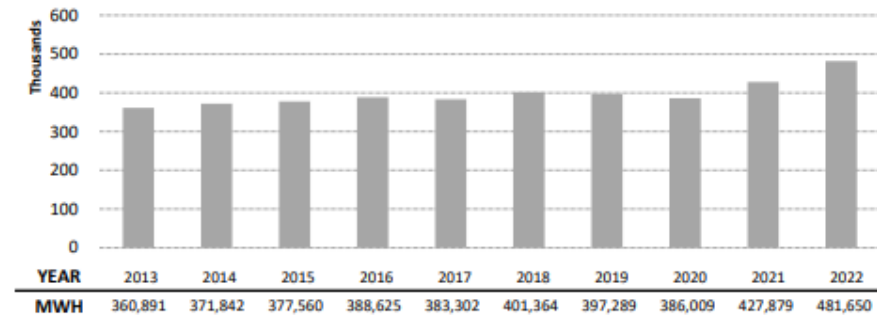
Net Purchases (Energy): Purchases from Sonat, OSP, Deficit Purchases, 3rd Party - Supp, Summer Purchase, Annual Strip, and Buy Through. **Excluded** Surplus and 3rd Party Sales.

Net Purchases (Capacity): Capacity that is purchased via IPTs and/or other supplementals.

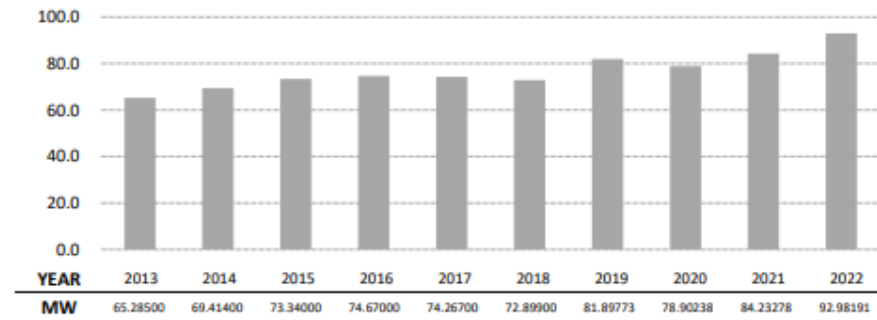
Emission-Free: resources include Nuclear and Hydro. Fossil resources include Coal, Gas, and Net Purchases.

HISTORICAL INFORMATION: EAST POINT

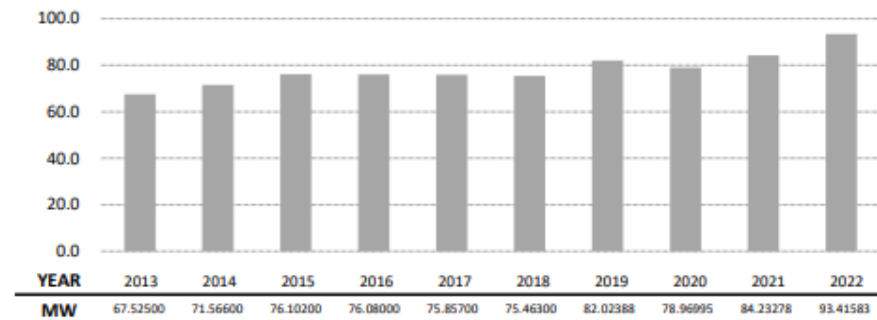
DELIVERED ENERGY AT DP



COINCIDENT PEAK AT DP



NON-COINCIDENT PEAK AT DP



How we Distribute our Power

Grove Substation

circuits
e0712
e0722
e0732

Willingham Substation

circuits
e0412
e0422
e0432
e0442

Ben Hill Substation

circuits
e0312
e0322
e0332

Lakemont Substation

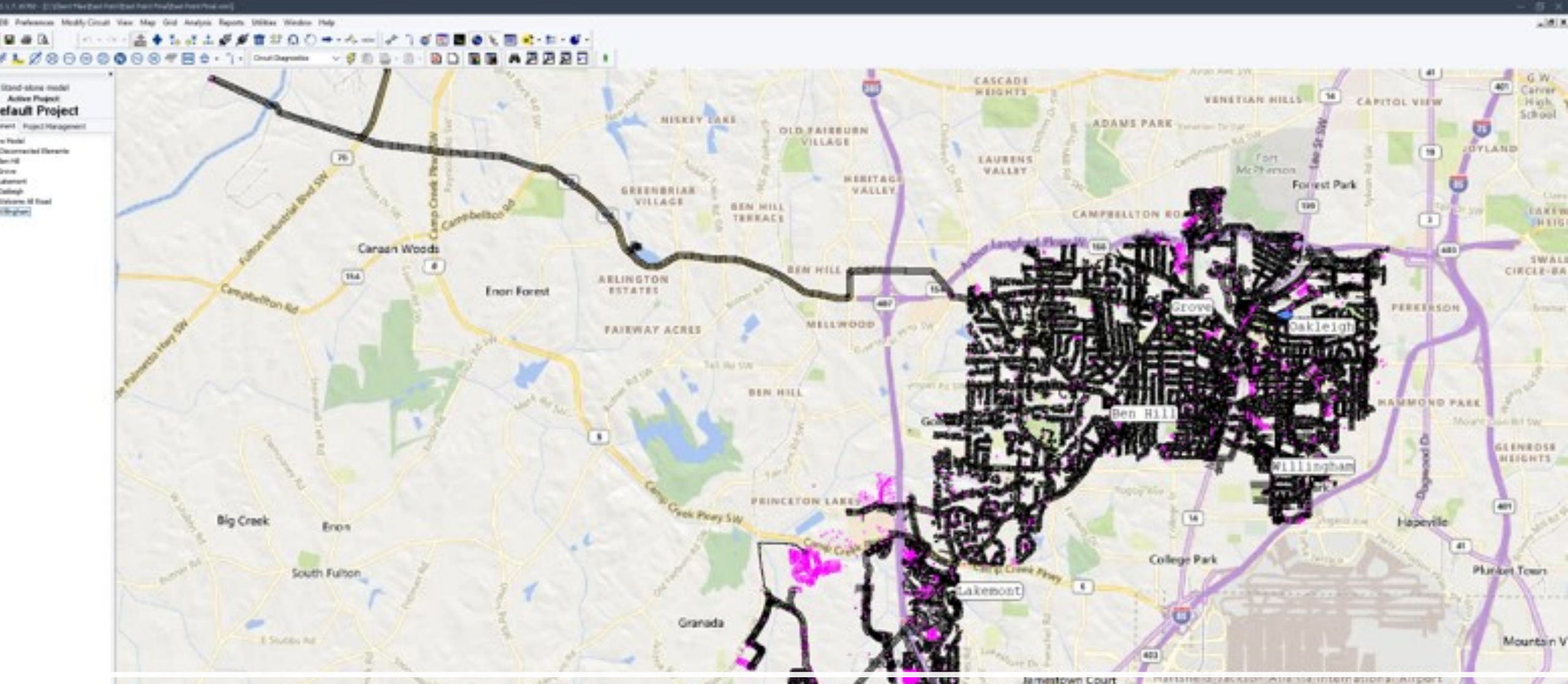
circuits
e0512
e0522
e0532
e0542

Oakleigh Substation

circuits
e0212
e0222
e0232
e0242

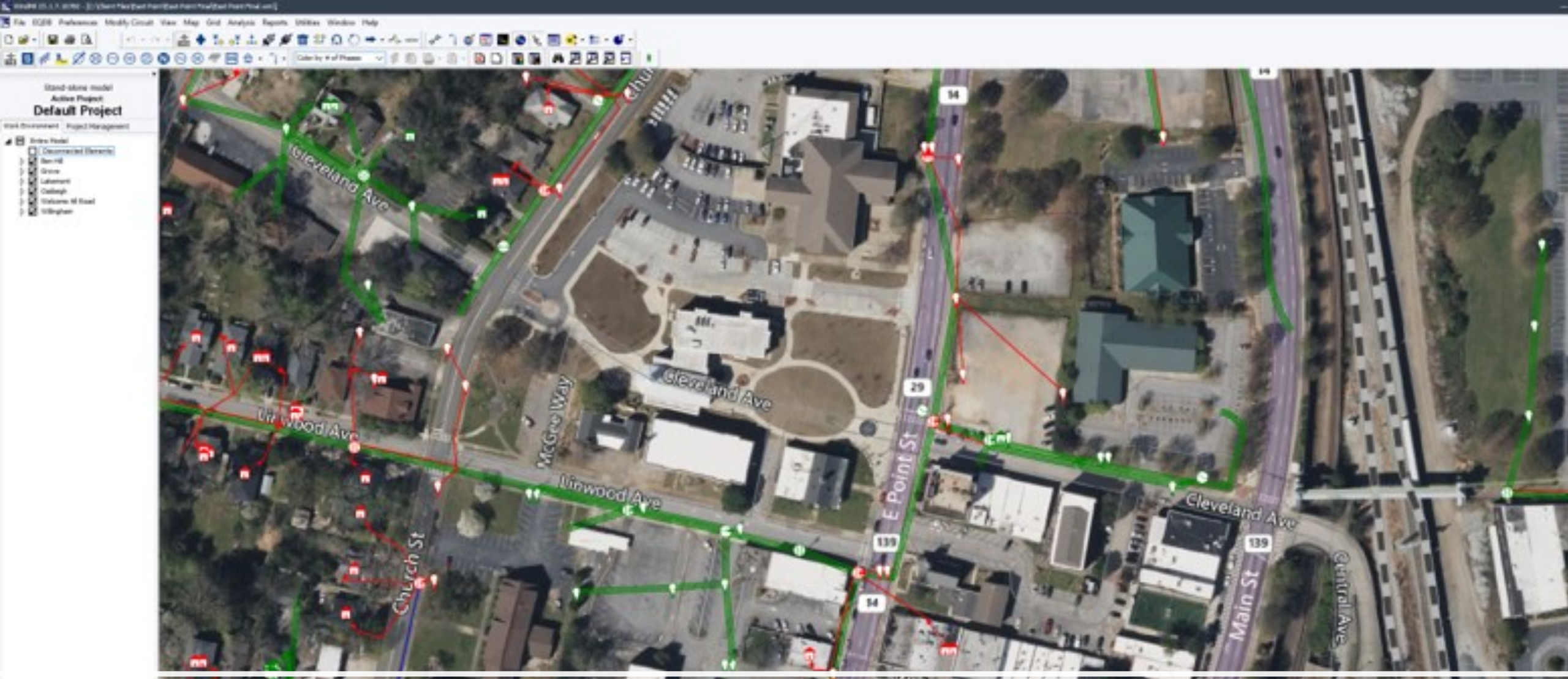
Welcome All Substation

circuits
b8312
b8422

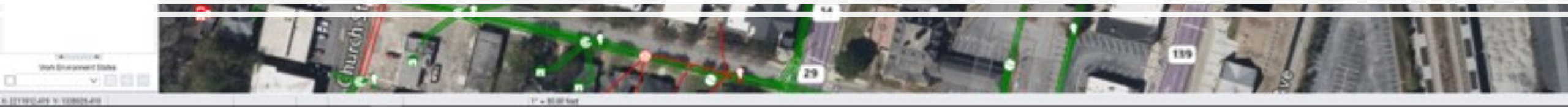


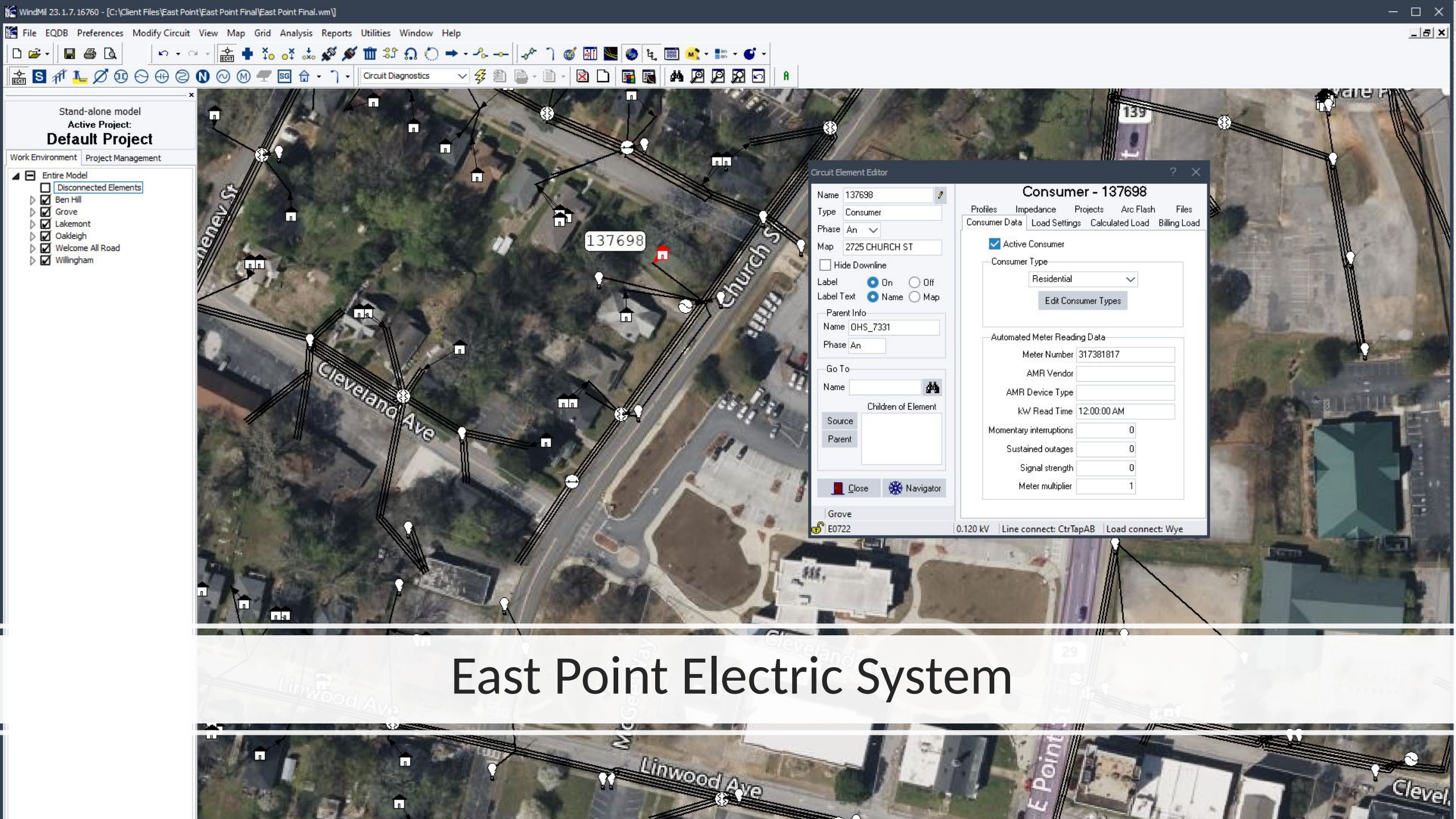
East Point Electric System





East Point Electric System





East Point Electric System

Grid Hardening Overhead to Underground

Heather Drive



Arrowood Drive



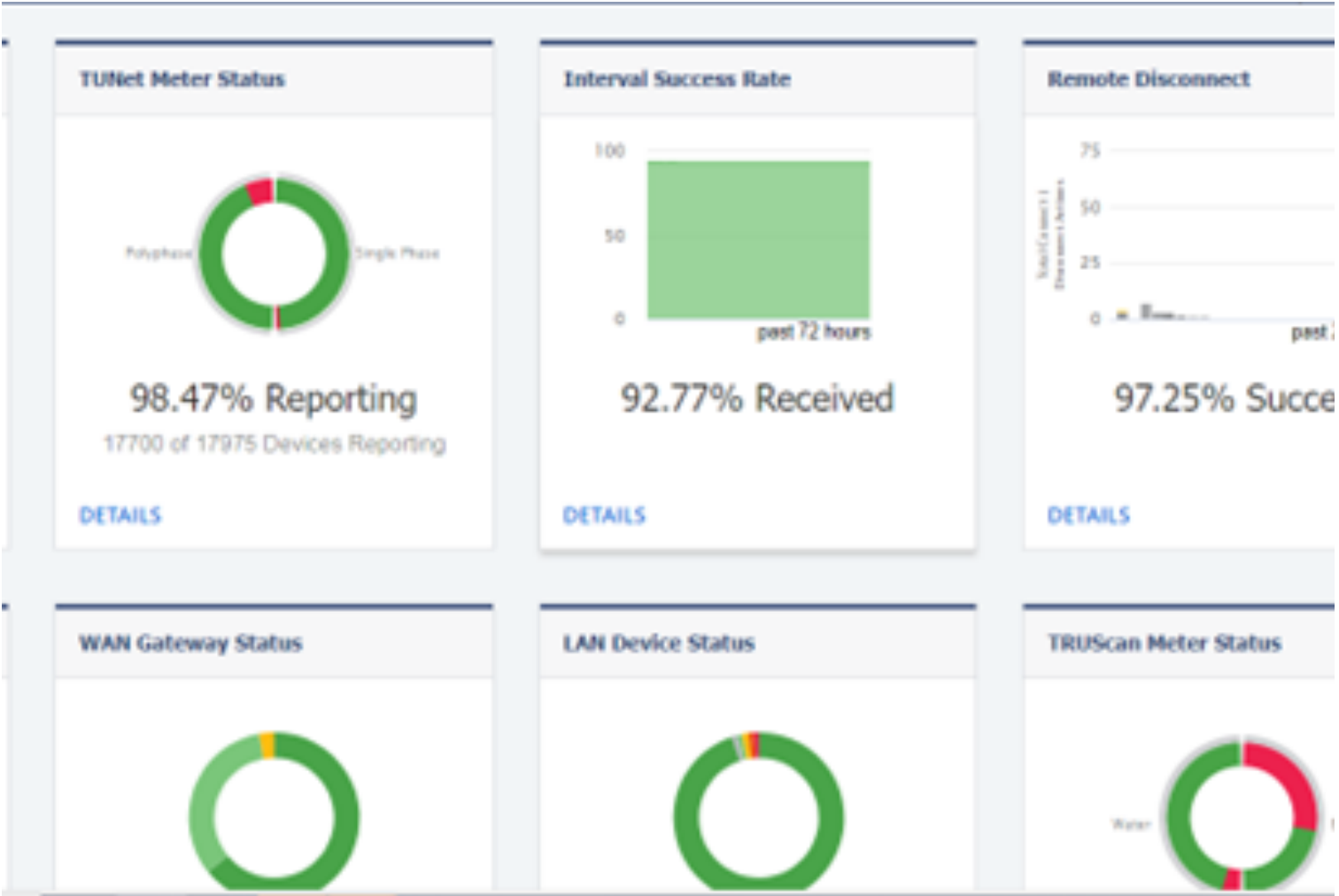
**Ben Hill/Dodson
Road**

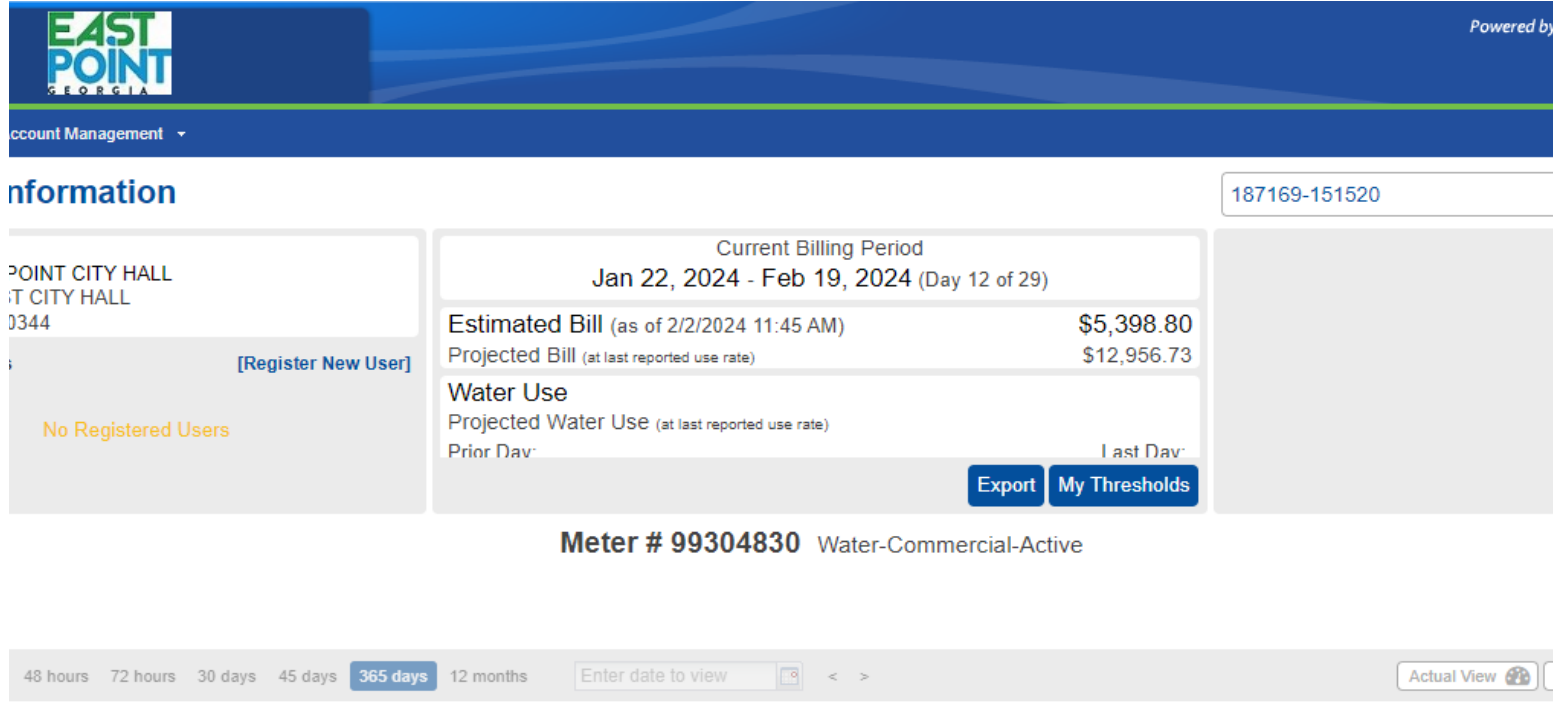


Westchester Dr.

AMI Meters

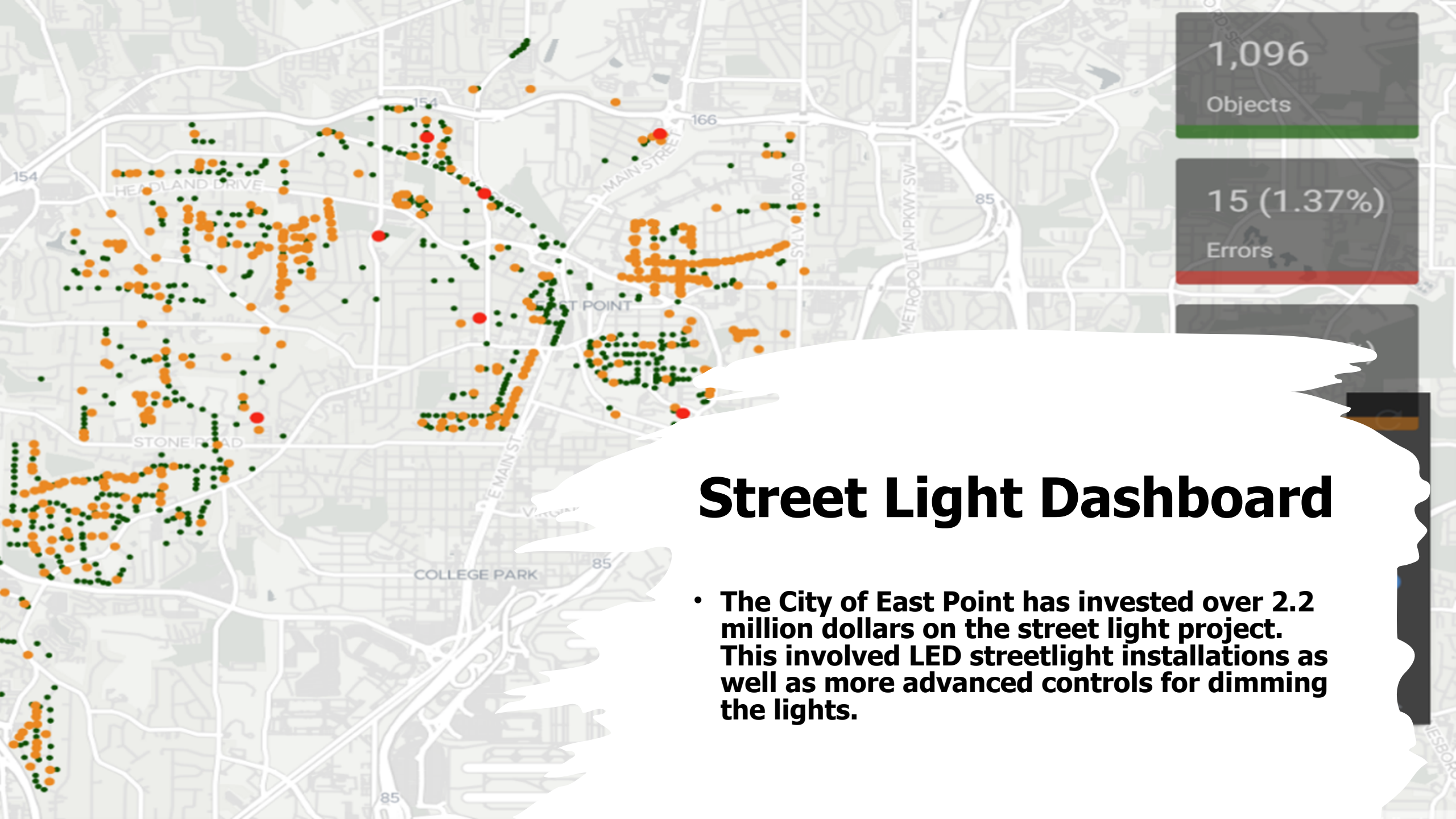
The City of East Point has invested over 6 million dollars into the Advanced Meter Infrastructure, (AMI) system, which is an integrated system of smart meters, communications networks, and data management. This is a highly efficient Smart Grid platform that combines a flexible hybrid communications network with advanced applications that work together to reduce utility operational cost, improve system efficiencies, and improve customer service. AMI is automated and allows real time data.





Utility Hawk

Utility Hawk is a customer portal solution that help City of East Point water and electric customers build stronger customer relationships. By presenting useful accurate data and actionable information, this function helps resolve high bill issues, and give customers more control over how they use utilities. The Utility Hawk customer portal is currently 90% complete and in the testing phase. We are hoping to have the new system rolled out to citizens and business owners by the end of this month.



1,096
Objects

15 (1.37%)
Errors

Street Light Dashboard

- The City of East Point has invested over 2.2 million dollars on the street light project. This involved LED streetlight installations as well as more advanced controls for dimming the lights.

City of East Point-Trees



East Point Power Equipment List



Special Lighting Projects

-Jefferson Park Rec Center

-John D. Milner Athletic
Complex

-Sykes Park Tennis Complex



How to Report a Power Outage

- Email:
poweroutage@eastpointcity.org
- 404.270.7010

